

Crawford Contempo By Celebration Homes.

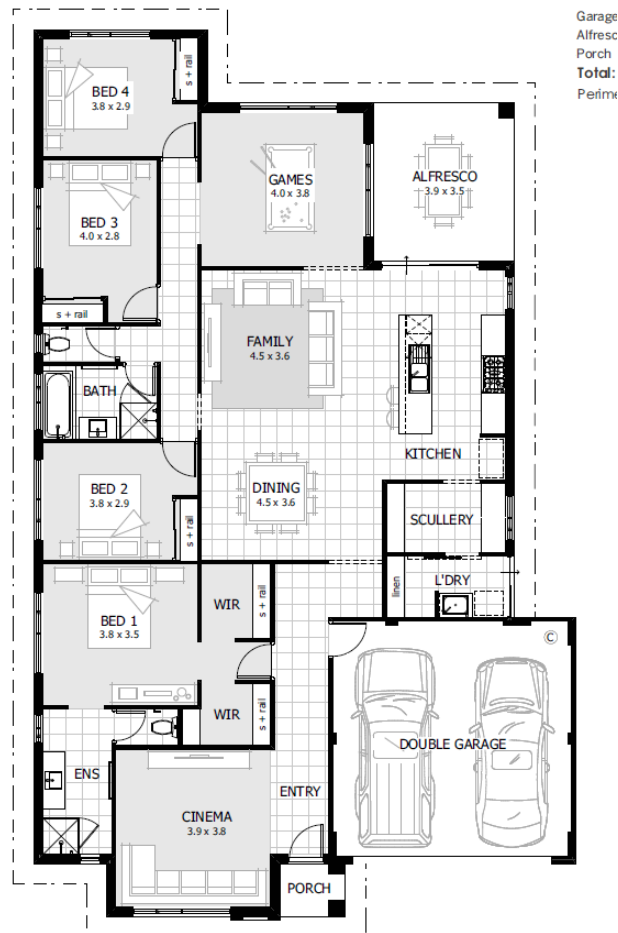
- m² block with 15m frontage
- Land only price \$320,000
- Caesarstone throughout,
- Glass or tiled splashback,
- Ducted AC,
- Paving to Porch, driveway, and alfresco inc. crossover,
- 31/28c high Ceilings,
- Laminate or tiled flooring,
- Carpets,
- Deluxe Kitchen inc. 1m island bench, hafele undermount sink & overhead cabinets,
- 1020mm front door,
- LED lighting

\$0

- Call: [0488 111 067](tel:0488111067)
- email: sales@laketreeby.com.au

BUILDER

- Call: Conrad Robson [0413 443 040](tel:0413443040)
- email: crobson@celebrationhomes.com.au



The material and information contained in this flyer in relation to the home design is prepared and provided solely by the respective builder, not by Lake Treeby, and is indicative only. Persons interested in the House and Land package must make further enquiries in relation to the home design and applicable prices. Prices shown are indicative only and are subject to change. Please see the House and Land Disclaimer at laketreeby.com.au.

Green spaces for wellbeing.

Lake Treeby is built around the idea of creating health and happiness. The neighbourhood is centred around a picturesque lake with walkable leafy streets, beautiful parks, retained natural areas, active play spaces, barbecues, shaded picnic spots and dog walking areas.



Conveniently placed to live well.

Lake Treeby is less than 3km to Cockburn Gateway Shopping City, Cockburn Central train station and the Kwinana Freeway. It's just 25 minutes from the Perth CBD, plus there are local shops, cafés and parks nearby. A new Primary School and High School are planned for Treeby by 2023.



Neighbourly belonging is part of the plan.

Lake Treeby is designed to be an urban village, where walk paths, multi-purpose parks, sports clubs and community events encourage interaction and belonging. It's a place where children connect over outdoor cricket, neighbours look out for each other, and people chat in the street.



Lake Treeby is a safe and inclusive community.

This is a neighbourhood where people feel happy, healthy and safe. It is a private estate, with safe road designs and ordered public open spaces. Street lighting makes it safe to walk at night. And the community celebrates cultural diversity and multi-generational living.

